



Black Swallowtail for State Butterfly!!

MEET OUR BUTTERFLY

The Black Swallowtail Butterfly can be found throughout the entire state of Michigan. It is so common that you may not even notice it. It is fairly easy to tell apart.

The scientific name of the Black Swallowtail Butterfly is *Papilio polydamus*.



Life Cycle of a Black Swallowtail Butterfly



Egg



Larvae (caterpillar)



Chrysalis (pupa)



Michigan's Food Industry depends on pollinators. The way that we grow our crops is dependent on the pollinators that visit our crops.

Pollinators are integral to Michigan's agriculture, crops and tourism.

UNDERSTAND THE LEGISLATION

LEGISLATIVE UPDATE
The House has passed H.R. 119 and it has been sent to the Senate. California has passed SB 1000 and it has been sent to the Senate. The State of Michigan has passed the Pollinator Protection Act. This act aims to protect and enhance the pollinator population in Michigan.

The House has passed H.R. 119 and it has been sent to the Senate. California has passed SB 1000 and it has been sent to the Senate. The State of Michigan has passed the Pollinator Protection Act. This act aims to protect and enhance the pollinator population in Michigan.

California and New York have both passed legislation to protect pollinators. Michigan has also passed legislation to protect pollinators.

Michigan has passed legislation to protect pollinators. This act aims to protect and enhance the pollinator population in Michigan.



Black Swallowtail

The Black Swallowtail, unlike other swallowtails, is a native of Michigan. It is a member of the Papilionidae family. The Black Swallowtail is a member of the Papilionidae family. It is a member of the Papilionidae family.

What Can I Do To Help
Visit the Michigan Pollinator Garden. The Michigan Pollinator Garden is a place where you can learn more about pollinators and how to help them. Visit the Michigan Pollinator Garden. The Michigan Pollinator Garden is a place where you can learn more about pollinators and how to help them.

Support Pollinators

Visit the Michigan Pollinator Garden. The Michigan Pollinator Garden is a place where you can learn more about pollinators and how to help them. Visit the Michigan Pollinator Garden. The Michigan Pollinator Garden is a place where you can learn more about pollinators and how to help them.

Visit the Michigan Pollinator Garden. The Michigan Pollinator Garden is a place where you can learn more about pollinators and how to help them. Visit the Michigan Pollinator Garden. The Michigan Pollinator Garden is a place where you can learn more about pollinators and how to help them.

Visit the Michigan Pollinator Garden. The Michigan Pollinator Garden is a place where you can learn more about pollinators and how to help them. Visit the Michigan Pollinator Garden. The Michigan Pollinator Garden is a place where you can learn more about pollinators and how to help them.

Michigan can help attract the Black Swallowtail Butterfly by providing food and nesting sites.

The Black Swallowtail Butterfly first came to Michigan in 1837. It is a member of the Papilionidae family. The Black Swallowtail Butterfly first came to Michigan in 1837. It is a member of the Papilionidae family.

The Black Swallowtail Butterfly first came to Michigan in 1837. It is a member of the Papilionidae family. The Black Swallowtail Butterfly first came to Michigan in 1837. It is a member of the Papilionidae family.



 **Support The**  **BLACK SWALLOWTAIL** **For State Butterfly**



Naturally
Inspirational



MICHIGAN BLUE STAR HIGHWAY CIRCA 1952

Through administrative action in 1947, Michigan's Blue Star Memorial Highway was established. The Highway included:

- 128 miles of US 31 from the Indiana border to Marquette City and
- 13.5 miles of US 10 across the Michigan Peninsula to Grand Haven
- Length: 141.5 miles

In 1948, Michigan's Blue Star Memorial Highway was formally dedicated in Marquette City. Between 1947 and 1950, the American Garden Clubs of Michigan installed the Blue Star Memorial Highway markers at 49 roadside locations along the designated highway.

In 1952, Act 171 was passed to remove the permission highway.

In 2001, Act 102 was passed, redesignating Act 171 of 1952 of the Highway as the portion of the Highway Blue today and extending the portion of the Highway Blue today as follows:

Today, the Highway is defined as follows:

- South Entrance of US 31 from Indiana
- north of Niles to Berrien County
- north Entrance of US 31 to US 131 or exit 130
- from north of US 131 to US 131 or exit 130
- from north of US 131 to US 131 or exit 130
- from north of US 131 to US 131 or exit 130
- Length: 136.275 miles



BLUE & GOLD STAR PROGRAM

MEMORIALS

Year	1947	1948	1949	1950	1951	1952	1953	1954	1955	1956	1957	1958	1959	1960	1961	1962	1963	1964	1965	1966	1967	1968	1969	1970	1971	1972	1973	1974	1975	1976	1977	1978	1979	1980	1981	1982	1983	1984	1985	1986	1987	1988	1989	1990	1991	1992	1993	1994	1995	1996	1997	1998	1999	2000	2001	2002	2003	2004	2005	2006	2007	2008	2009	2010	2011	2012	2013	2014	2015	2016	2017	2018	2019	2020	2021	2022	2023	2024																						
Count	1	2	3	4	5	6	7	8	9	10	11	12	13	14	15	16	17	18	19	20	21	22	23	24	25	26	27	28	29	30	31	32	33	34	35	36	37	38	39	40	41	42	43	44	45	46	47	48	49	50	51	52	53	54	55	56	57	58	59	60	61	62	63	64	65	66	67	68	69	70	71	72	73	74	75	76	77	78	79	80	81	82	83	84	85	86	87	88	89	90	91	92	93	94	95	96	97	98	99	100



MARKER & OUR HISTORY & FIRSTS

- 1947: National Council of American-Soviet Friendship (NCSF) established the Blue Star Memorial Highway as a commemorative program. The highway was to be named in honor of the American soldiers who died in WWI.
- 1948: NCSF authorizes the use of the Blue Star Memorial Highway as a commemorative program. The highway was to be named in honor of the American soldiers who died in WWI.
- 1951: NCSF expands the Blue Star Highway (which had been limited to WWI veterans) to the Armed Forces that have defended the United States of America.










DOUBLETREE
BY HILTON™
BAY CITY • RIVERFRONT


Garden Clubs, Inc.
Meridian
Garden Club
mfgardenclubs.org

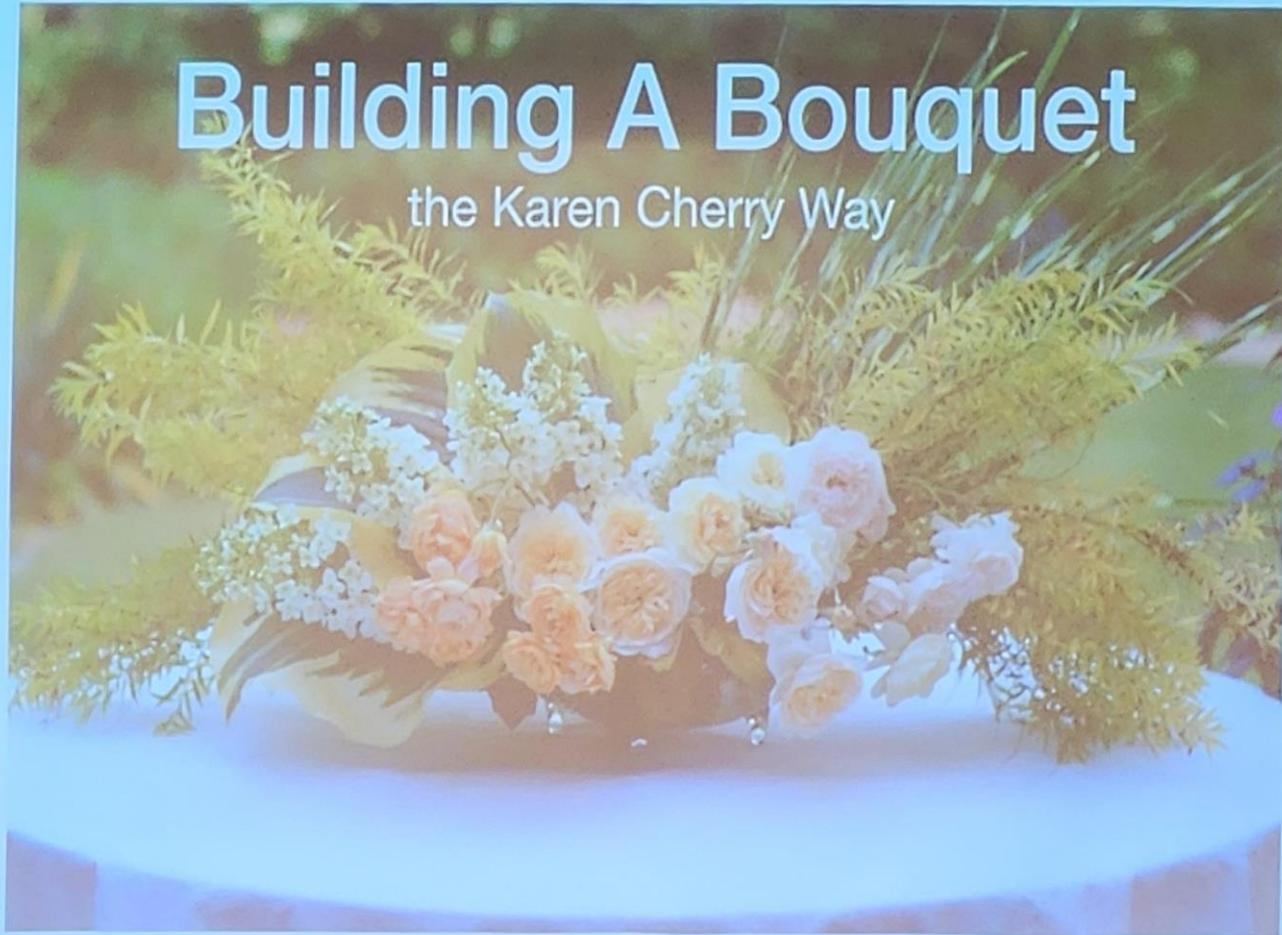


Honoring
Lynne Ehnert, Central Region Director
Designer
Lisa Robinson
Holland Garden Club & West Michigan Flower Arrangers Guild



Building A Bouquet

the Karen Cherry Way











   ITEM# 27

Flower Arrangement
Donated by Speaker, Karen Cherry & MCC
Estimated Retail Value \$75

MINIMUM BID \$42 INCREMENTS MUST BE AT LEAST \$2

PLACEMENT	CLUB	BID













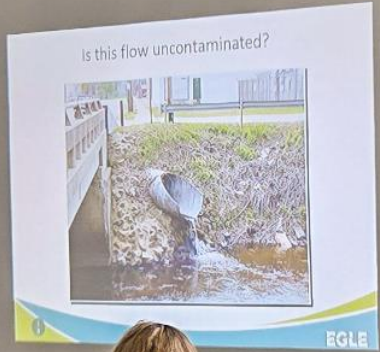


CLIMATE SICK
www.c2rus.org

EXIT

EXIT

DOUBLE TREE
BY HILTON
BAYVILL • HAYWARD







Honoring
Former MGC Presidents

Designer
Judy Nelson
Three Rivers Club of Little Gardens & Lakeshore Flower Arrangers Guild

MGC Women
Pearls
of Wisdom
And Talent





Smitten With The Mitten



Shore to Shore

2024









