

NATIONAL GARDEN CLUBS
Environmental School

Course 2

Series #9

The Living Earth
Land and Related Issues

November 3-4, 2025

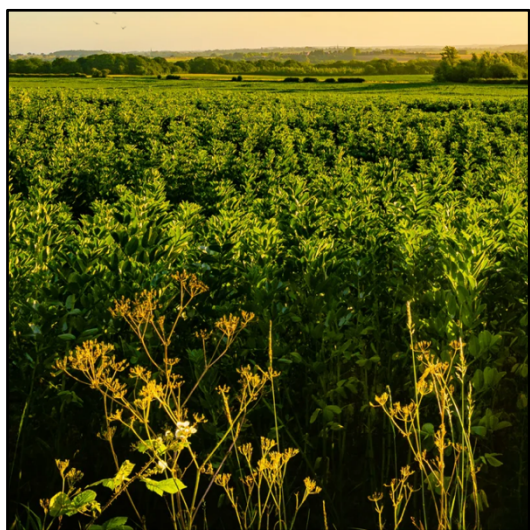
In-person

Monday 9:30 AM – 5:00 PM

Tuesday 9:00 AM – 5:00 PM

Michigan State University
W.K. Kellogg Biological Station
Conference Center
and Bird Sanctuary

3700 E Gull Lake Drive
Hickory Corners, Michigan



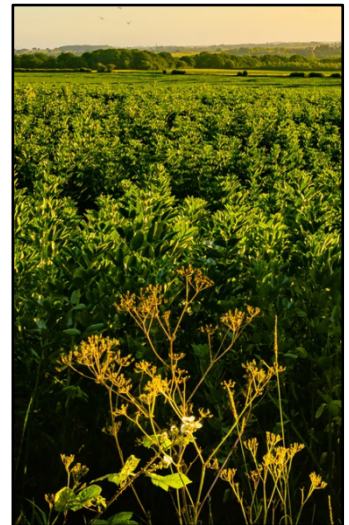


Environmental School Course 2

is sponsored by:



W. K. Kellogg
Biological Station
MICHIGAN STATE UNIVERSITY





Location

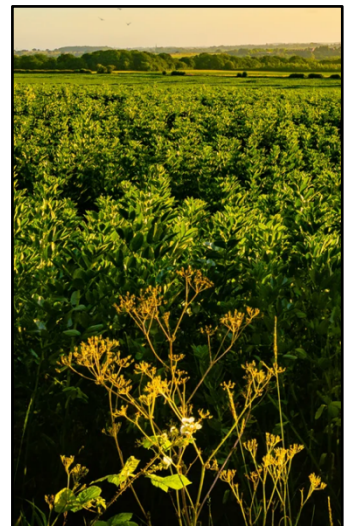


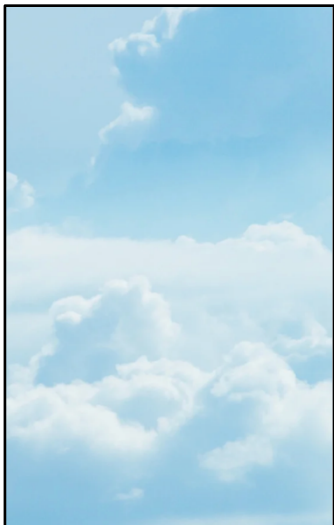
**3700 E. Gull Lake Drive
Hickory Corners
Michigan**

The MSU W. K. Kellogg Biological Station and Conference Center are located northeast of Kalamazoo and northwest of Battle Creek, on the east side of Gull Lake, near Richland, Michigan.

This site includes the MSU W.K. Kellogg Biological Station Academic Building, which houses labs for scientific studies, the W.K. Kellogg Manor House, the summer home of W.K. Kellogg, and the Conference Center, which contains the main dining room, dorms, and cottages.

We will meet in the Biological Station auditorium and lunches will be available in the Conference Center main dining room. A large nearby parking area accommodates all buildings.





Suggested Overnight Accommodations

On-site Accommodations

MSU W.K. Kellogg Conference Center

Dorm-style small furnished suites are available on site for \$95/person for one occupant, and \$80/person for two occupants per night. Each suite includes a bedroom with twin beds, full bath, kitchenette, and living area. The suites do not include telephone or television.

Also available on-site are two fully furnished group cottages. The Caretaker Cottage is a 3-bedroom with a Queen, a Twin, and two Twins for \$215/cottage/night. The Lakeside Cottage has four Queen bedrooms for \$300/cottage/night. All amenities are included.

To reserve, contact: Nicole Kokx, Sales and Event Coordinator:

MSU W.K. Kellogg Conference Center & Manor House
3700 East Gull Lake Drive, Hickory Corners, MI 49060
Email: blanch46@kbs.msu.edu Phone: 269-671-2160

Alternative Nearby Accommodations

The Inn at Gull Lake (5 miles away)

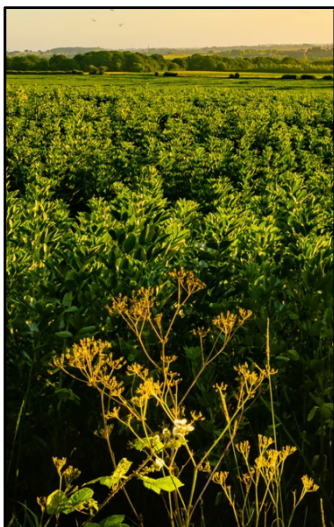
12500 M-89 Richland, MI

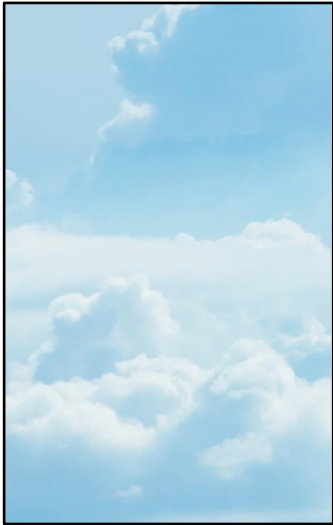
Website: innatgulllake.com Phone: 269-731-4131

Gull Lake View Golf Club & Resort (5 miles away)

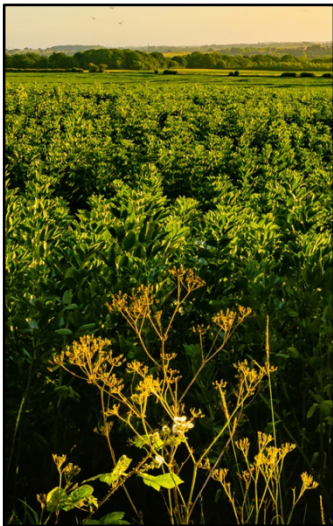
2-bedroom/2-bath Villas

7417 North 38th St. Augusta, MI 49012 888-824-2558





Other Overnight Accommodations



Comfort Inn Plainwell

17 miles away via M-43/M-89

622 Allegan Street Plainwell, MI 269-685-9891

Hilton Garden Inn Kalamazoo downtown

17 miles away via M-343/M-89

303 N. Rose Street Kalamazoo, MI 269-382-4000

Radisson Plaza Hotel–Kalamazoo downtown

17 miles via M-343/M-89

100 West Michigan Avenue Kalamazoo, MI 269-343-3333



Four Points by Sheraton–Kalamazoo near I-94

19 miles via I-94/35th St

3600 Old Cork Street Kalamazoo, MI 269-385-3922

DoubleTree by Hilton–Battle Creek downtown

16 miles via M-89

50 Capital Avenue Battle Creek, MI 269-380-0320



Curriculum

Monday, November 3

9:30 a.m.- 10:00 a.m. Registration, Continental Breakfast, Welcome

10:00 a.m.–11:00 a.m. Ecology – Land

Brandon Kristy, PhD. Candidate/Graduate Research Fellow
MSU W.K. Kellogg Biological Station/Evans Lab

11:10 a.m.–12:10 p.m. Plants -- Agriculture

Rachel Drobnak, Phd. Candidate/Graduate Research Fellow
MSU W.K. Kellogg Biological Station/Crop & Soil Sciences

12:10 p.m.–1:30 p.m. Lunch

1:30 p.m.–2:30 p.m. Source Reduction of Pollutants, Toxics & Materials

Dan Broersma, Sustainability Environmental Manager,
City of Holland, Michigan and Author of Practical Sustainability.

2:40 p.m.–3:40 p.m Coastal Zone Management

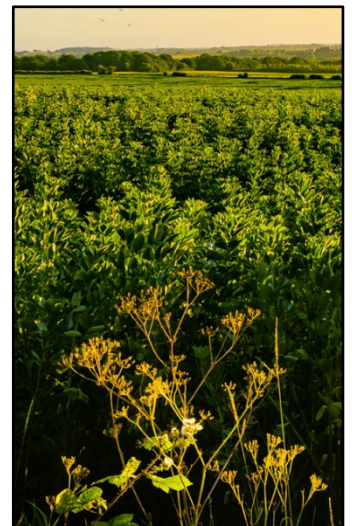
Zack Chamberlin & Emily Kirkpatrick, Great Lakes Shorelands Specialists
Environment, Great Lakes, and Energy (EGLE)

3:50 p.m.–4:50 p.m. Environmental Science - Resources

Diedre Kirk, Professor of Environmental and Biological Science
Southwestern Michigan College

Note to Master Gardeners:

Master Gardeners may apply to their local MSU agent for CE credit.





Curriculum

Tuesday, November 4

8:30 a.m. – 9:00 a.m. Registration, Continental Breakfast, Welcome

9:00 a.m.–10:00 a.m. Wildlife-Animals-The Misunderstoods

Daniel Goldberg, Visiting Professor of Biology and Ecology
Grand Valley State University

10:10 a.m.–11:10 a.m. Trees & American Forests

Presentations by Kenneth (K.J.) Kettler II,
Forest Manager MSU, AG Bio Research, W.K. Kellogg Forest

11:20 a.m.–12:20 p.m. Earth Stewardship – Gardening with Nature

Tom Small, Founder of Kalamazoo Area Wild Ones,
Author of Using Native Plants to Restore Community

12:20 PM – 1:50 p.m. Lunch

1:50 p.m.–2:20 p.m. Proctor Review

Beth Markowski, MGC State Environmental School Chair

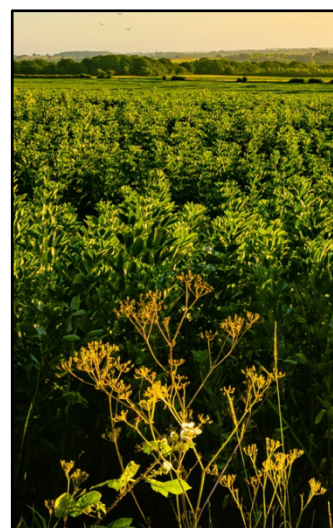
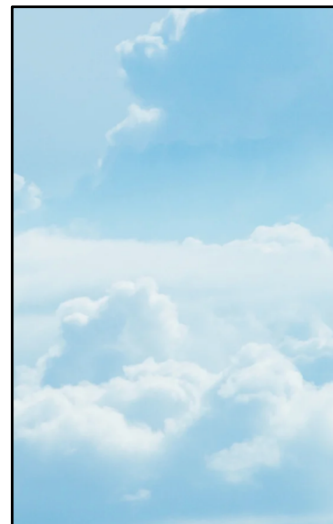
2:30 p.m.–4:30 p.m. Nature Discovery Field Trip

Management Staff of MSU W.K. Kellogg Forest Accommodations for
this field trip are not available.

Please notify chair for pre-arranged alternate options.

Note to Master Gardeners:

Master Gardeners may apply to their local MSU agent for CE credit.





Exam

An optional exam will be conducted by remote computer submission. The test will be emailed to participants on November 5 and completed submission is due no later than midnight November 11, 2025.

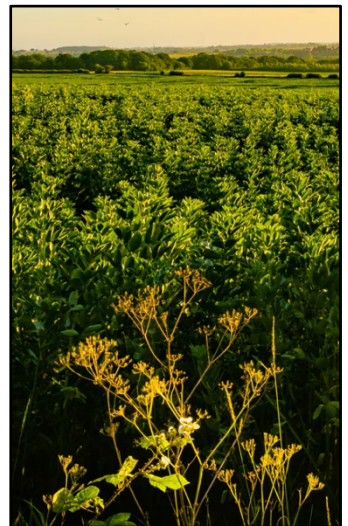
There will be 40 questions on material covered in classroom, not to include field trip. However, participation in the field trip or a pre-arranged alternative is required for course credit.

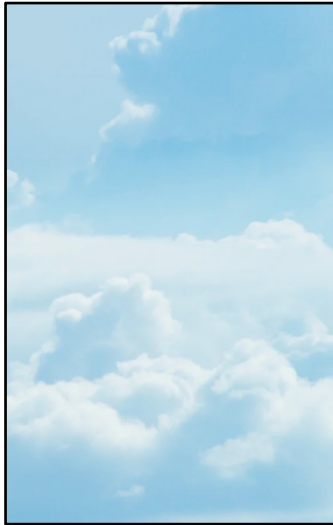
Optional test may be completed with open book/notes and submitted online.

All National Garden Clubs (NGC) members who successfully complete all four courses with test results at 70% or higher will qualify for title of National Garden Clubs (NGC) "Environmental Consultant."

Nonmembers may complete the courses and the tests, join an MGC garden club within a year from the last course, and become an NGC "Environmental Consultant."

All MGC Environmental Consultants also automatically become a member of the MGC Michigan Consultants Council at no cost.





Cost

Registration Fee: \$60

Non-Member Fee: \$75

REGISTRATION DEADLINE IS OCTOBER 17

No refunds after the registration deadline.

*There will be a 10% late fee after the registration deadline,
if late registration is accepted by the Chair.*

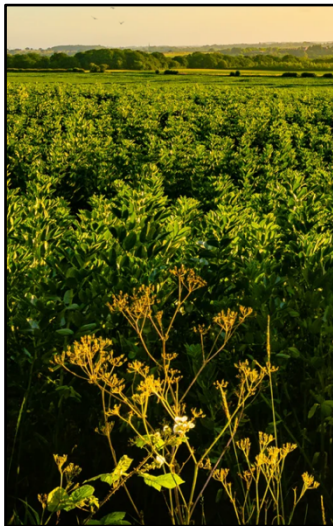
All cancellations will incur a 10% fee

Payment will be accepted on-line when you register.

If you are unable to pay on-line,
you may request to pay by check

Please email Ronalee Polad for instructions:

rpomad@migardenclubs.org





Important NGC Forms

All attendees seeking credit for this program must have an NGC Form 6 or 7 on record with the MGC School State Chair.

If this is your first course, fill out a Form 6,
or your first Refresher, fill out a Form 7.

Follow the links below.

NGC Form 6

[Click here for NGC Form 6](#)

NGC Form 7

[Click here for NGC Form 7](#)

Submit your completed Form 6 or Form 7 via email to:

bmarkowski@migardenclubs.org

**If you are from out of state, please request an official record
from your State School Chair.**

*Note: All lectures and tours must be attended for credit to be given. If you
have a disability and need accommodation, please contact the local chair
before registration to facilitate accommodation.*



Committee

Chula Vista Garden Club

Bunny LaDuke, Local Chair

Cathy McAuliffe, Registrar

Joanne Beertema

Carole Culver

Michelle Farris

Pat Hansson

Karla Labby

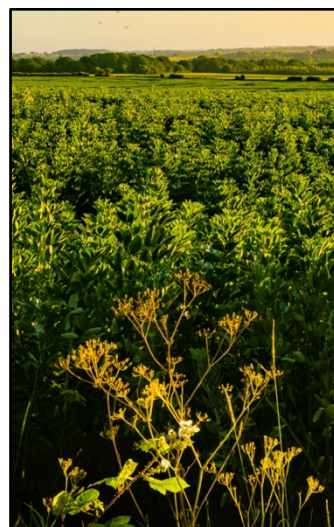
Kay Lehmann

Nancy Lewis

Inge Mesick

Jackie Smith

Liz Troman



Michigan Garden Clubs

MGC President: Lisa Robinson

MGC Third Vice-president: Jean Horrocks

District Director: Judy Nelson

Environmental School State Chair: Beth Markowski

Environmental School, Series #9 Local Chair: Bunny LaDuke

Registration: Ronalee Polad

Brochure: Deb Harvey





Contact Us

All communication with registrants will be via email:

rhladuke@aol.com

*Please be sure to add this email address
to your contacts so our communication
with you does not go to your spam folder.*

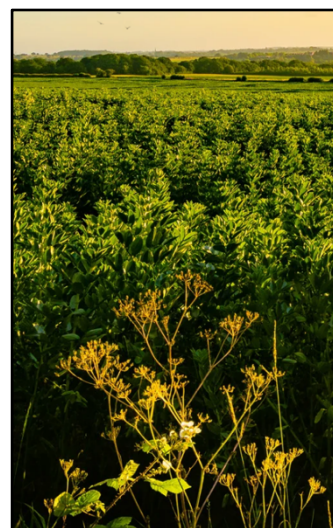
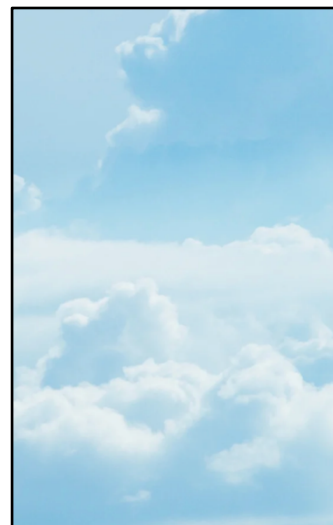
For further information on all NGC Schools
see the websites below:

Michigan Garden Clubs (MGC)

www.migardenclubs.org

National Garden Clubs (NGC)

www.gardenclub.org





Join Us!

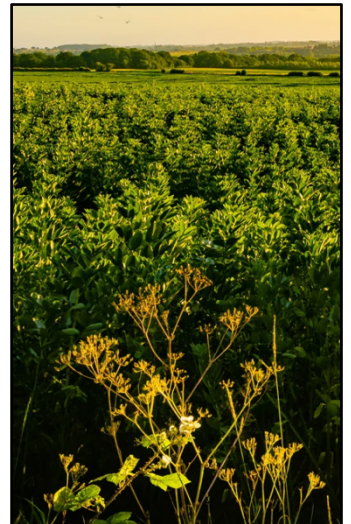
There are several MGC garden clubs in the Kalamazoo area.
Please contact one of the Kalamazoo Garden Council co-
presidents if you are interested in joining:

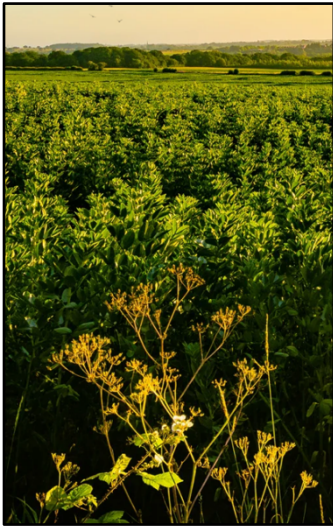
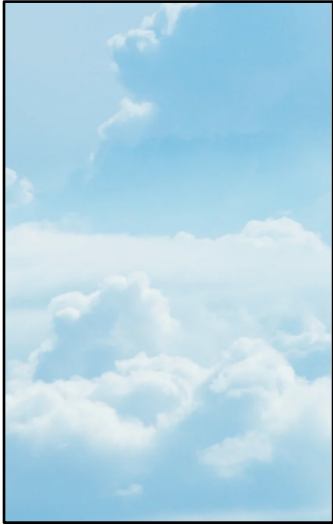
Pat Hansson phansson00@gmail.com 269-327-8207

Karla Labby karlalabby@yahoo.com 269-910-0724

Or visit the Kalamazoo Garden Council website at:
<https://www.kalamazoogardencouncil.org>.

become a member





Register

If you wish to register, please click on the blue box below.
You will be re-directed to Michigan Garden Clubs website
to complete your registration.



By clicking the registration box, you acknowledge
that you understand the information presented
in this brochure, and wish to register.

*Any photos taken at this event may be used
in upcoming informational and promotional materials.*

*If you do not want your photo used,
please notify the School Registrar when you check in.*