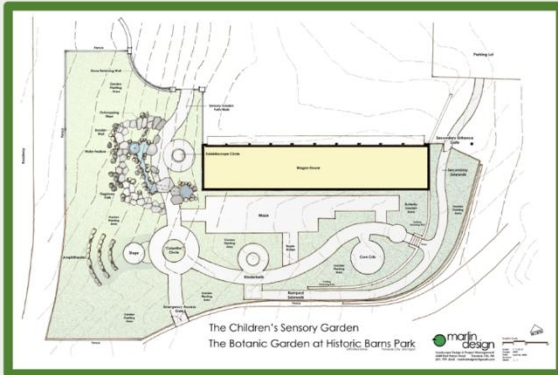




National Garden Clubs, Inc.

**Landscape Design School
Course 1
Series 24**



**In-person
Thursday & Friday
April 23-24, 2026
8:30 AM - 4:30 PM**



**The Boardman River
Nature Center
1450 Cass Rd.
Traverse City, Michigan 48685**



Landscape Design School Course 1

Is sponsored by:
Michigan Garden Clubs, Inc.

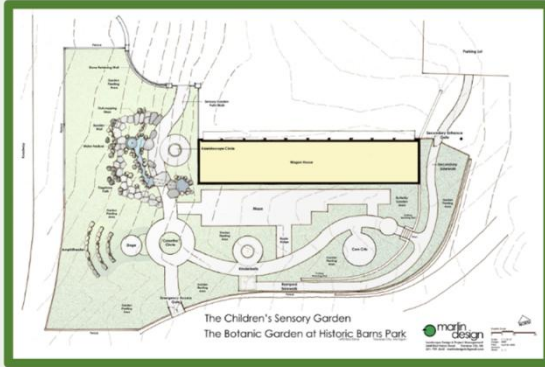


Photo Courtesy of Mark Polinko



Traverse City Logo Garden
Photo Courtesy of Susan Townsend



Photo Courtesy of The Boardman River
Nature Center



Central Region



The Friendly Garden Club
Of Traverse City, Inc.



National Garden Clubs, Inc.

Landscape Design School

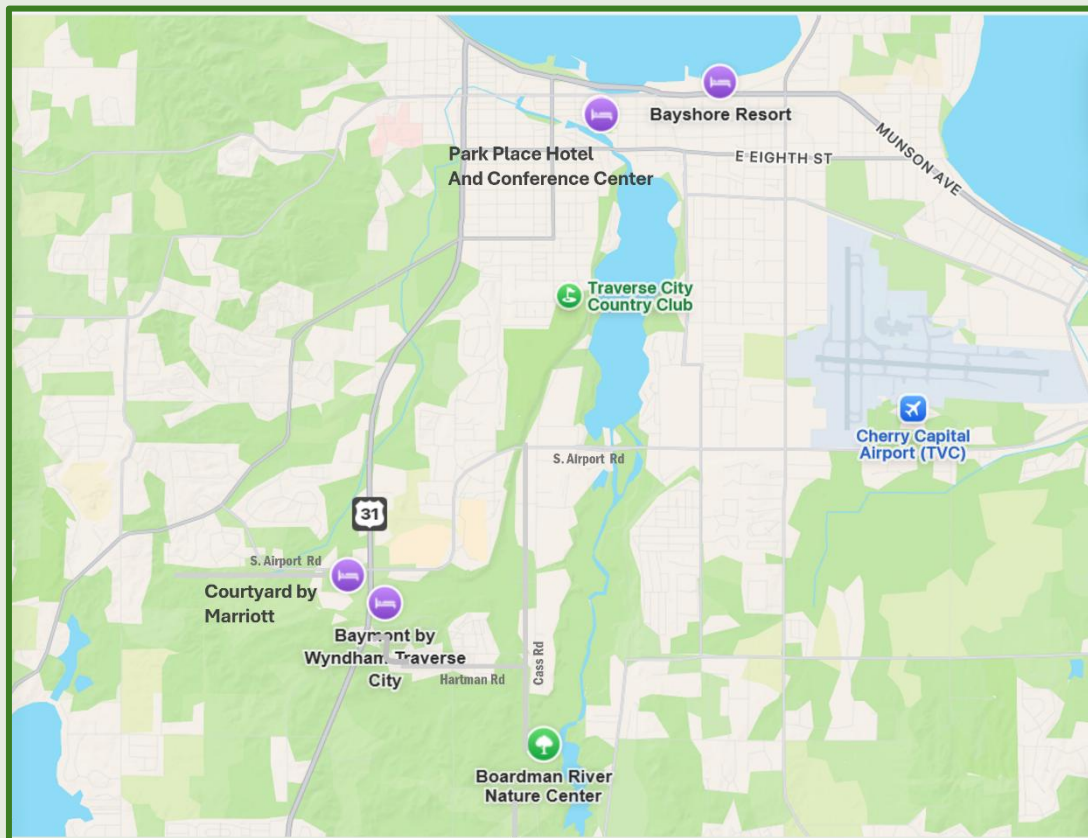
Course 1

Series 24



About Our Meeting Location

The Boardman River Nature Center, pictured on the front cover, located at 1450 Cass Rd in Traverse City, is home to the Grand Traverse Conservation District, GTCD. Serving northern Michigan, the GTCD provides public access to more than 3000 acres of treasured natural areas around the county and is dedicated to educating the public of all ages about sustainable land management practices to create a healthy, diverse ecosystem, including teaching sustainable farming practices at their incubator farm.



National Garden Clubs, Inc.

**Landscape Design School
Course 1
Series 24**



Overnight Accommodations

Closest to the Nature Center:

Baymont Inn 2326 N US 31S. Just South of Airport Rd. \$\$
Breakfast 1.8 Miles from Boardman River Nature Center (BRNC).

Courtyard by Marriott 3615 S. Airport Rd, West. On the corner of
Airport Rd. and US31 S. \$\$\$ Breakfast 2.2 Miles from BRNC.

Downtown:

Park Place Hotel 300 E. State St. \$\$\$ Restaurant available.
4.1 Miles from BRNC.

Waterfront:

Bayshore Resort 833 E. Front St. \$\$\$\$ Breakfast
5.1 Miles from BRNC

National Garden Clubs, Inc.

**Landscape Design School
Course 1
Series 24**



Course 1 Curriculum

Thursday April 23, 2026

8:30 -9:00	Registration	
9:00-10:00	Development of LD in Ancient Times	Tim Banfield
10:00- 10:10	Break	
10:10 - 11:10	Principles and Elements of LD	Tim Banfield
11:10- 11:20	Break	
11:20 - 12:20	Basics of a Site Plan	Tim Banfield
12:20 - 1:15	Lunch Break	
1:15 - 2:15	Learning About Your Ecosystem	Matthew Ross
2:15 - 2:30	Break	
2:30- 3:30	Color in the Landscape	Matthew Ross
3:30- 4:00	Review	

Friday April 24, 2026

8:30 -9:00	Registration	
9:00-10:00	Design for the Environment	Tim Banfield
10:00- 10:10	Break	
10:10 - 11:10	Space, Design and People	Tim Banfield
11:10- 11:20	Break	
11:20 - 12:20	Developing your Garden Plan	Tim Banfield
12:20 - 1:15	Lunch	
1:15 - 2:15	Xeriscaping	Matthew Ross
2:15 - 2:30	Break	
2:30- 3:30	Designing Gardens with Native Plants	Matthew Ross
3:30- 4:00	Review	

National Garden Clubs, Inc.

**Landscape Design School
Course 1
Series 24**



About Our Instructors

Tim Banfield

Tim is the owner and President of Outdoor Living, Inc., in Lansing, Michigan. With over 45 years of professional experience, Tim received his BLA degree from Michigan State University and has been a Licensed Landscape Architect since 1980. He is an on-going member of the American Society of Landscape Architects. He taught at Lansing Community College beginning in 1989 and has generously taught Landscape Design School for Michigan Garden Clubs, Inc. members for 30 years! His giving back to the community has been multiplied many times over as his LDS students have been knowledgeable participants in various projects in their own community.

Matthew Ross

Matthew is the Executive Director of the Botanic Garden at Historic Barns Park in Traverse City, Michigan. A Michigan native, he is a graduate of Michigan State University, receiving his BS in Horticulture, emphasis in Landscape Design Construction Management and an MS in Horticulture, emphasis Urban Forestry. Interestingly, while at MSU, Matthew was the recipient of one of the Michigan Garden Clubs Scholarships. After completing his Master's Degree, he taught at Owens Community College, in Ohio, for 6 years, before becoming the Director of Continuing Education at Longwood Gardens in Philadelphia for almost 9 years. Since coming to Traverse City, he has overseen the design and construction of several new gardens and significant expansion of programming at the Botanic Garden. Matthew generously began teaching Landscape Design School for MGC during the previous series, which started in 2024.

National Garden Clubs, Inc.



Landscape Design School
Course 1
Series 24

Exam
For Consultants Certification

All National Garden Clubs (NGC) members who successfully complete all four courses with test results at 70% or higher will qualify for title of National Garden Clubs (NGC) "Landscape Design Consultant."

The exam and the course evaluation will be conducted on-line. Links will be emailed to participants on Monday, April 27, 2026, by noon. The test and evaluation must be completed by 11:00 pm on Sunday, May 3, 2026. Participants will have 3 hours to complete the exam in one session. Do not log out or turn off your computer during the test.

There will be 50 multiple choice questions on material covered in classroom. The exam may be completed using your class materials and notes.

Non-members may complete the courses and the tests, join an MGC garden club within one year from the last course, and become an NGC "Landscape Design Consultant."

All MGC Landscape Design Consultants also automatically become a member of the MGC Michigan Consultants Council at no additional cost.

Existing NGC Landscape Design Consultants may refresh their credentials as often as once per year, but must refresh at least every 5 years, to maintain their credentials.

**** Check with your local MSUE Master Gardener Advisor regarding education credits.**

National Garden Clubs, Inc.

**Landscape Design School
Course 1
Series 24**



Registration Fees

Member Fee: \$60

Non-Member Fee: \$75

REGISTRATION OPENS MARCH 1, 2026

REGISTRATION DEADLINE IS APRIL 9, 2026

No refunds after the registration deadline.

There will be a 10% late fee after the registration deadline, if late registration is accepted by the Chair.

All cancellations will incur a 10% fee

Payment will be accepted on-line when you register.

**If you are unable to pay on-line, you may
request to pay by check.**

Please email Ronalee Polad for instructions:

rpolad@migardenclubs.org

National Garden Clubs, Inc.

**Landscape Design School
Course 1
Series 24**



Important NGC Forms

All attendees seeking credit for this program must have an NGC Form 6 or 7 on record with the MGC School State Chair.

If this is your first course, fill out a Form 6,
or your first Refresher, fill out a Form 7.

Follow the links below:

NGC Form 6:

[Ctrl + Click here for NGC Form 6](#)

NGC Form 7:

[Ctrl + Click here for NGC Form 7](#)

Submit your completed Form 6 or Form 7 via email to:

Deb Plichta

dplichta@migardenclubs.org

If you are from out of state, please request an official record
from your State School Chair.

Note: All lectures and tours must be attended for credit to be given. If you have a disability and need accommodation, please contact the local chair before registration to facilitate accommodation.

National Garden Clubs, Inc.

Landscape Design School
Course 1
Series 24



YOUR HOSTS

The Friendly Garden Club of Traverse City, Inc.

Janet Hickman, Local Chair

Marilyn Astroth

Terry Harding

Sue Soderberg

Marilyn Rebant

Mary Melvin

Michigan Garden Clubs, Inc.

Lisa Robinson, President

Jean Horrocks, 3rd Vice President Schools

Deb Plichta, State Landscape Design Chair

Dorothy Sandoval, District 5 Director

Ronalee Polad, Registrar

National Garden Clubs, Inc.

Landscape Design School
Course 1
Series 24



Contact Us

All communication with registrants will be via email.
Please save Local Chair, Janet Hickman's email in your contacts so our communications with you do not go to your spam folder.

janethickman@migardenclubs.org

For further information on all NGC Schools,
Please visit the website links below:

[Michigan Garden Clubs, Inc. \(MGC\)](#)

[National Garden Clubs, Inc. \(NGC\)](#)

National Garden Clubs, Inc.

Landscape Design School
Course 1
Series 24



JOIN US!

There are many MGC garden clubs throughout the state. If you are interested in finding a club near you go to the Michigan Garden Clubs, Inc., website at:

www.migardenclubs.org

Click on the JOIN US! tab

on the ribbon at the top of the page.

Then Click on “Find Your Local Garden Club”.

Clubs are organized by County on the State Map.

We hope you become a member!

National Garden Clubs, Inc.

**Landscape Design School
Course 1
Series 24**



REGISTER

If you wish to register, please click on the gray box below. You will be re-directed to the Michigan Garden Clubs website to complete your registration.

**Beginning March 1, 2026
Register for
LANDSCAPE DESIGN SCHOOL
Course 1
by clicking here**

By following the above link, you acknowledge that you understand the information presented in this brochure and wish to register.

*Note: Any photos taken at this event
may be used in upcoming
informational and promotional
materials.*

If you do not want your photo used please notify the School Registrar when you check in.